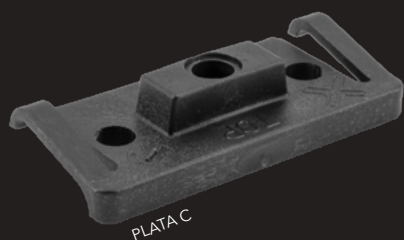


# PLATA

## DECKING CONNECTOR



The **PLATA C** and **PLATA P** decking connectors ensure quick and easy installation of side-grooved, dimensionally stable wood or composite decking.

The decking board is clamped to the substructure with one screw through the side groove using the decking connector.

Integrated clamping or sprung arms automatically hold the connector in the side groove of the boards.

The joint spacers ensure uniform joints and can compensate swelling movements of up to 2 mm per board.

**PLATA C** The plastic decking connector with reinforced screw zone ensures optimum force distribution in the side grooves of the board.

**PLATA P** The stainless steel decking connector, with a total length of 65 mm, conceals the substructure while providing an optimum hold.

Recommended substructure:

Preferably softwood such as larch, Douglas fir, thermo pine, thermo spruce or wood of similar density as well as RELO N aluminium substructure joists.

### PLATA P with UNIA1

Description	PU	Prod. No.
4,8x34 mm	100 PCS	013304002
4,8x47 mm	100 PCS	013304003

### PLATA C with UNIA1

Description	PU	Prod. No.
4,8x34 mm	100 PCS	012904000
4,8x47 mm	100 PCS	012904001

### PLATA C with UNIA4

Description	PU	Prod. No.
4,8x34 mm	100 PCS	012904020
4,8x47 mm	100 PCS	012904021



PLATA C with System screw UNIA4 stainless steel A4 for terraces near coastal regions and around pools



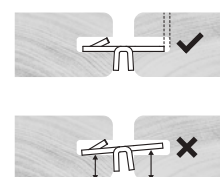
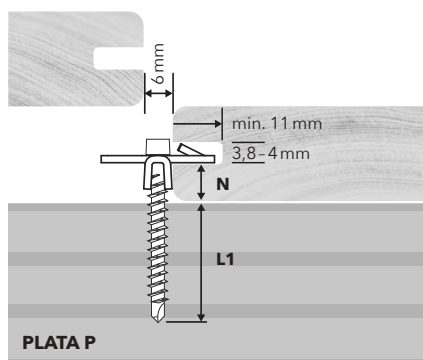
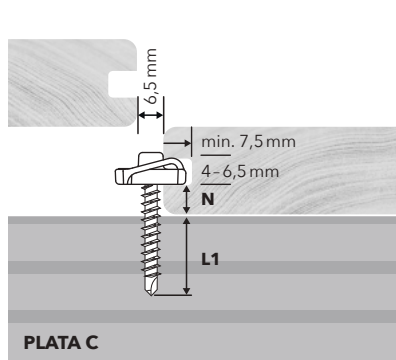
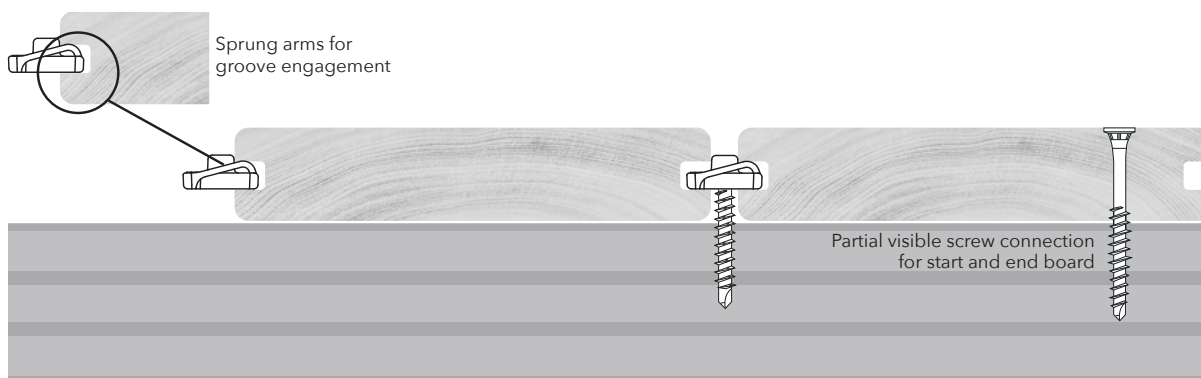
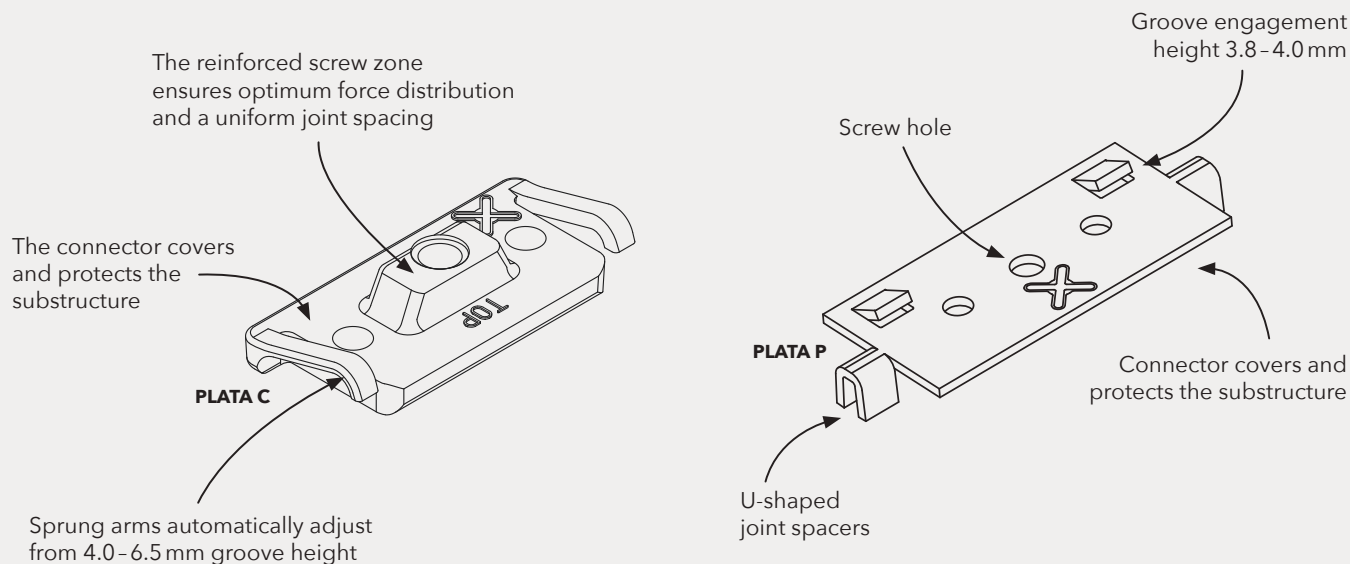
### SET-PACK

Each packaging contains the screws required for installation, UNIA system screws and assembly instructions



### BRANDING

Custom branding upon request



#### DOWNLOADS



#### Installation



#### Board exchange



#### Data sheet



#### Tips & Tricks

OVERVIEW	PLATA C with UNIA 4.8x34 mm				PLATA C with UNIA 4.8x47 mm				PLATA P with UNIA 4.8x34 mm				PLATA P with UNIA 4.8x47 mm			
N mm	6-7	8-9	9.5-10.5	11-12	6-7	8-9	9.5-10.5	11-12	6-7	8-9	9.5-10.5	11-12	6-7	8-9	9.5-10.5	11-12
L1 mm	22	20	18	17	35	33	31	30	24	22	21	19	37	35	34	32
RELO N Substructure	■	■	■	■					■	■	■	■				
Wood Substructure					■	■	■	■					■	■	■	■
	■ Compatible substructure   Screw-in depth L1: RELO N min. 14.5 mm, max. 29 mm   Wood min. 26 mm															
Dimensions:	PLATA C: L 40 mm   W 18 mm   T 4.0 mm joint spacing 6.5 mm								PLATA P: L 65 mm   W 24 mm   T 1.5 mm joint spacing 6.0 mm							
Material:	PLATA C:		PP Polypropylene Recycled black UV and weather resistant						PLATA P:		Stainless steel black					
	System screw:		UNIA1 Hardened stainless steel with black surface coating UNIA4 A4 stainless steel with black surface coating													
Fastening type:	Concealed sliding point fixation															
Decking profile:	Dimensionally stable and modified wood species with side grooved profiled decking boards															