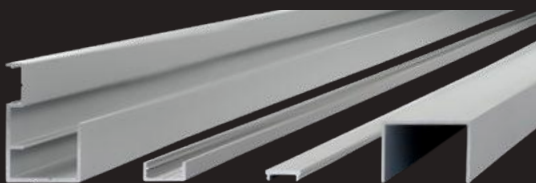
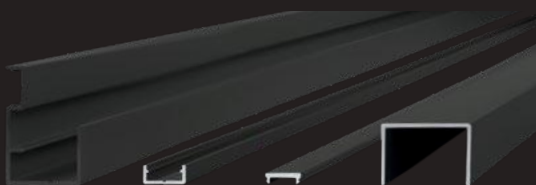


TERA

FENCE AND PRIVACY SCREEN HARDWARE AND FITTINGS



Introducing the **TERA** fencing and privacy screen kit, designed for effortless customization of fences, wind or privacy screen elements.

With the TERA PA **Post Connection Profile**, achieve a seamless transition from fence infill to post, enhancing the overall aesthetic appeal.

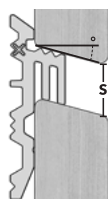
Simply insert fence infills, such as rhombus mouldings or smooth-edged boards, into the post connection profile and secure them in place. The generously sized mounting covers effectively mask any cut edges or length differences.

For rhombus-shaped fence infills, integrate different-sized joint spacers (FUGO 5 | 8 | 12 mm) between infills for varying levels of opacity.

Ensure stability with the slimline TERA SP **Stability Profile**, fitted between posts to prevent twisting of fence panels.

Hide screw connections elegantly with the TERA AP **Finishing Trim**, adding to the system's visual appeal.

Complete the look with the TERA ASP **Top Cap Profile**, providing a flawless finish and additional structural protection for the top fence infill board. Extend the end profile effortlessly with the optional extension set as needed.



| | Visible Joint (S) | | |
|---------|-------------------|-------------|-------------|
| | 15° Rhombus | 25° Rhombus | 30° Rhombus |
| FUGO 5 | ≈ 5 mm | ≈ 6 mm | ≈ 7 mm |
| FUGO 8 | ≈ 9 mm | ≈ 10 mm | ≈ 11 mm |
| FUGO 12 | ≈ 13 mm | ≈ 14 mm | ≈ 15 mm |

| FUGO joint spacer (PU for one fence panel) | | |
|--|--------|-----------|
| Description | PU | Prod. No. |
| FUGO 5 | 60 PCS | 016003000 |
| FUGO 8 | 60 PCS | 016103000 |
| FUGO 12 | 60 PCS | 016203000 |

optional accessories

| TERA-SET (for one fence panel) | | |
|--------------------------------|-------|-----------|
| Description | PU | Prod. No. |
| 19-23 mm RAL 7016* | 1 SET | 037300000 |
| 19-23 mm Anodised E6/EV1 | 1 SET | 037200000 |
| 24-27 mm RAL 7016* | 1 SET | 037500000 |
| 24-27 mm Anodised E6/EV1 | 1 SET | 037400000 |

SET-PACK

For one fence panel H 1,800xW 1,800mm | 3.24m²

- 2 Pcs. Post Connection Profile
- 10 Pcs. UNIA1 4.2x28 mm + 100 Pcs. UNIA1 4.2x17 or 22 mm
- 2 Pcs. Stability profile + 100 Pcs. UNIA1 4.2x17 or 22 mm
- 4 Pcs. Finishing trim
- 1 Pc. Top Cap Profile + 1 Pc. Installation manual

Post Connection Profile:
Sleek design for an
elegant appearance

Finishing trim: Conceals
screw channel for
a clean finish

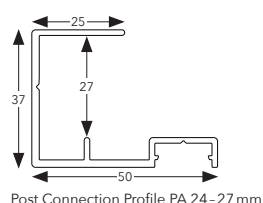
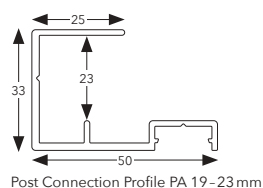
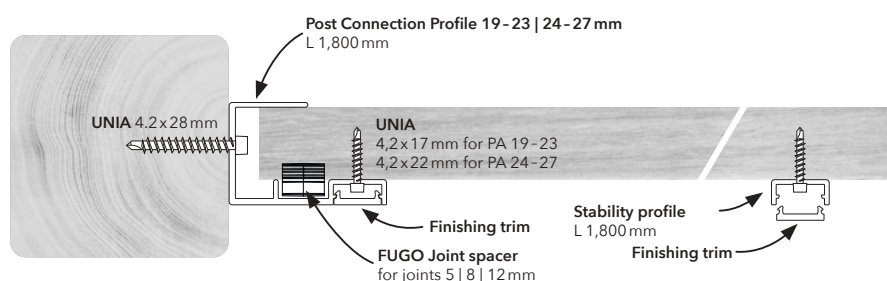
Insert Channel: Accommodates
FUGO joint spacers seamlessly

Screw Channel: Equipped
with an integrated V-groove
screw guide for effortless
installation

Stability Profile:
Slim design and
ensures stability

Top Cap Profile:
Provides a finishing touch for
the top of the fence or screen

E6 EV1 Surface Finish:
RAL 7016* High-quality anodized or
powder-coated surface



| OVERVIEW | TERA PA Post Connection Profile | TERA SP Stability Profile | TERA AP Finishing Trim | TERA ASP Top Cap Profile |
|---------------------|---|---|---|--|
| Dimensions: | Length 1,800 mm PA 19-23 for fence infills from 19-23 mm PA 24-27 for fence infills from 24-27 mm | Length 1,800 mm Width 18 mm Height 8 mm | Length 1,800 mm Width 15 mm Height 4.5 mm | Length 1,800 mm for PA 19-23 for PA 24-27 |
| Material: | Aluminium EN AW 6060 | | | |
| Surface: | Silver anodised E6/EV1 or powder-coated RAL 7016* | | | |
| Accessories: | FUGO Joint spacer 5 8 12 mm for rhombus mouldings | | | Extension-set for fence widths over 1,800 mm |

* Surface similar to RAL-Colour