

# HELPO

## DECKING CLAMP & BIT



The **HELPO decking clamp** is a useful installation accessory for laying of decking boards.

Its low-profile design prevents the decking boards from folding upwards and effortlessly enables a clamping force of approximately 150 kg.

To ensure even alignment along the entire length of the decking boards, one decking clamp should be used per running meter.

When combined with the HELPO installation aid, it ensures a uniform joint width with straight decking boards.



Clamping range up to 970 mm  
Joint engagement from 3 mm  
Flat clamping plate for start and end boards.

The **HELPO bit**, available in lengths of 50 mm or 75 mm, ensures easy handling, even for screw connections between the boards.

The hardened and tempered tool steel with a chrome-plated coating provides a long service life and, prevents extraneous rust marks unlike blank tool steel

Different bit sizes are easily distinguishable through color-coded markings.

TX 10 blue | TX 15 yellow | TX 20 white | TX 25 black

### HELPO decking clamp

PU	Prod. No.
1 PC	* 033900001

\* no branding possible

### HELPO Bit

Description	PU	Prod. No.
TX 10 - 50 mm	20 PCS	010202000
TX15 - 50 mm	20 PCS	010302000
TX20 - 50 mm	20 PCS	010402000
TX20 - 75 mm	20 PCS	010402001
TX25 - 50 mm	20 PCS	010502000

### DOWNLOAD



Tips & Tricks



Configurator



# HELPO

## COUNTERSINK PRE-DRILLING TOOL & INSTALLATION AID

The **HELPO countersink pre-drilling tool** allows precise and uniform mass drilling and countersinking for visible screw connections in decking construction in a single step.

The hardened and tempered chrome steel offers an extremely long service life and is suitable for all wood and wood-like decking boards.

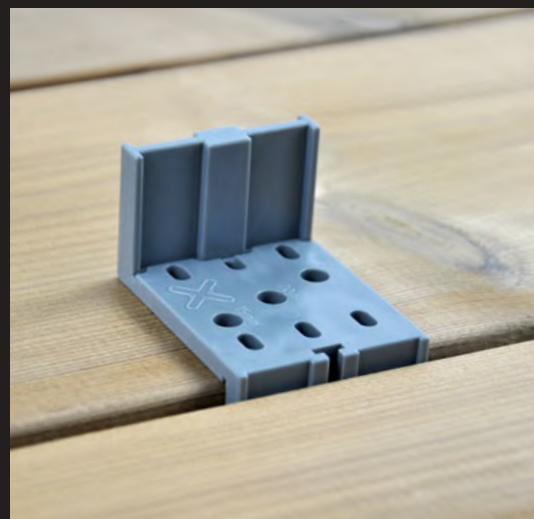
The drill bit's design with an integrated depth stop ensures a perfect head finish for the 5.0 or 5.5 mm diameter PROFILA, SOLIDA, and ELITA decking screws.

5.5 mm drilling diameter | 25 mm drilling depth  
8.0 mm countersink

The **HELPO installation aid** is a universal accessory, combining a joint spacer and drilling guide for decking construction.

Joint spacer permits a joint width from 5-8 mm. The Z-shape with 5 and 7 mm wall thickness can be enlarged by 1 mm to 6 or 8 mm joint widths using the supplied adapter.

The drilling guide enables standardized mass drilling without the need for measuring, with side-to-side distances of 15, 20 and 25 mm.



**BRANDING**  
Custom branding  
upon request



**SET-PACK**  
1 PC HELPO countersink pre-drilling tool  
2 PCS HELPO assembly aids  
1 PC HELPO TX25 bit

DOWNLOAD



Configurator

### HELPO Countersink tool

PU	Prod. No.
1 PC	010802000

### HELPO installation aid

PU	Prod. No.
4 PCS	007002000

### HELPO-SET

PU	Prod. No.
1 PC	008902000