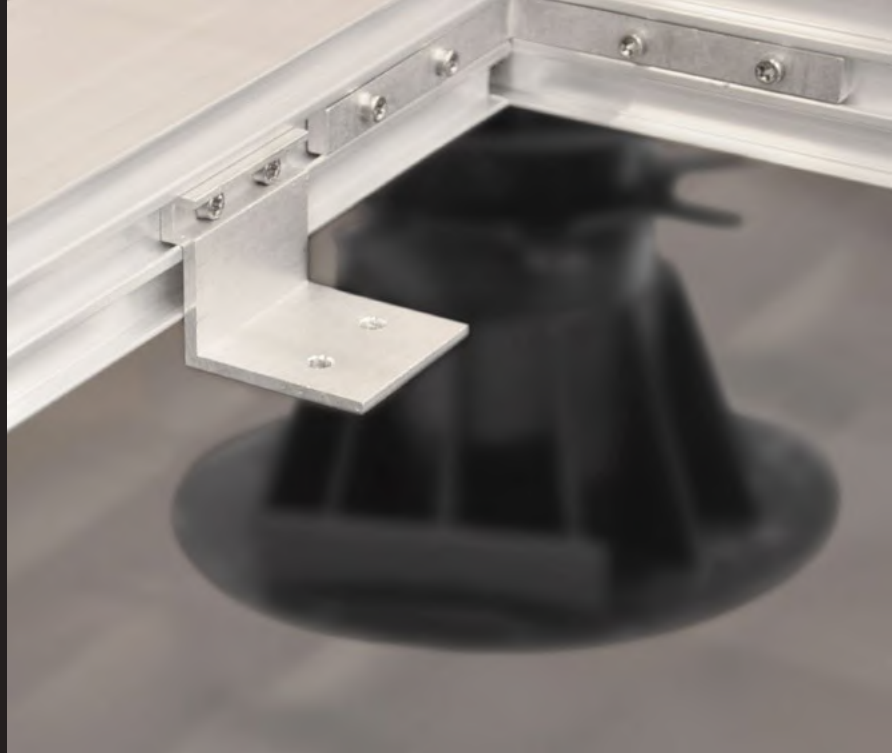
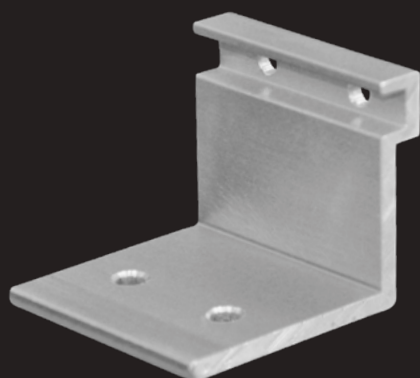


RELO AW

LOAD-BEARING BRACKET



The **RELO AW** substructure load-bearing bracket is the ideal accessory for RELO aluminium and wood substructure joists.

Using the load-bearing bracket, you can integrate non-visible counterweights e.g., with stone or concrete slabs, into the substructure very easily and quickly.

The additional loads prevent the decking boards from being forced up, especially around the perimeter of the decking; it can also be used to protect roof terraces from wind suction and provide a secure and impact resistant substructure for insulated flat roofs with the additional applied loading.

At least 4 brackets are required for each load bearing slab. Additionally, it is recommended to insert cross-bracings or counter battening to prevent the substructure from twisting due to the acting loads.

OVERVIEW

Dimensions: L 40 x W 40 x H 35 mm | 3 mm

Material: Aluminium blank

RELO AW17 SET

PU	Product No.
16 PCS	9009941018168



SET-PACK
Each package contains all the UNIA system screws required for mounting.

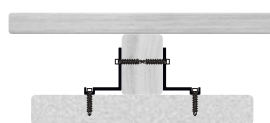
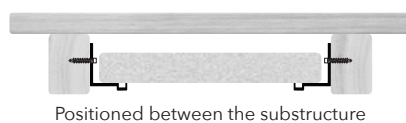
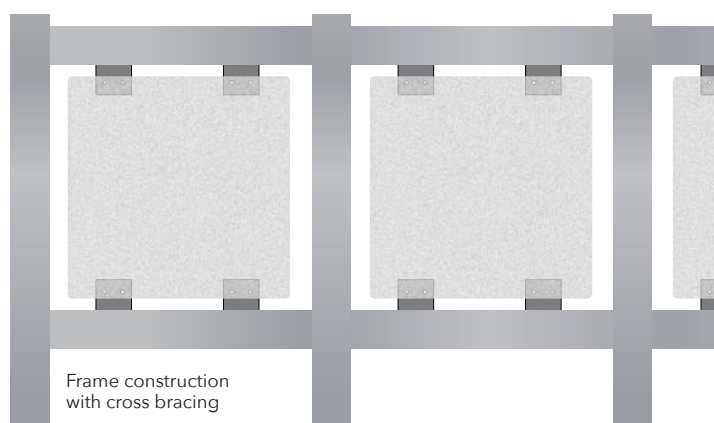
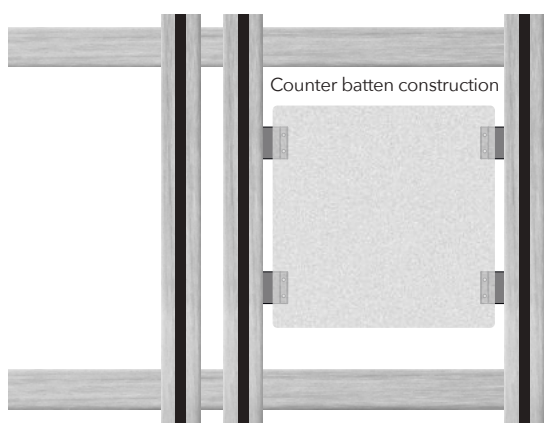
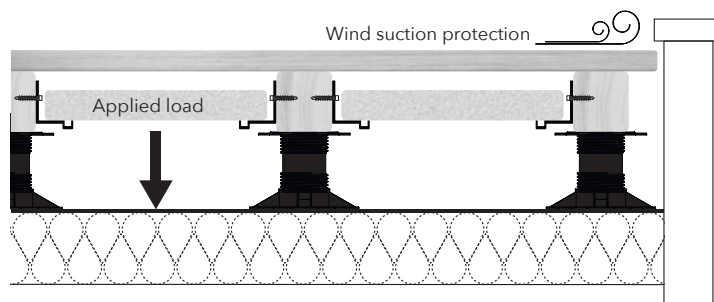
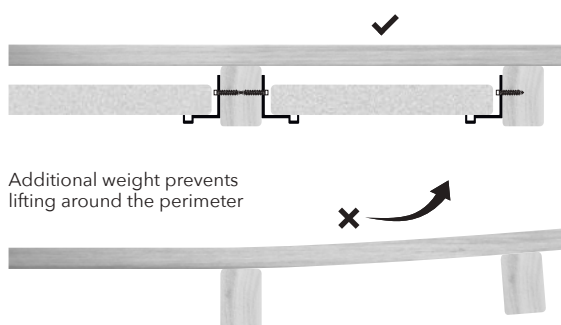
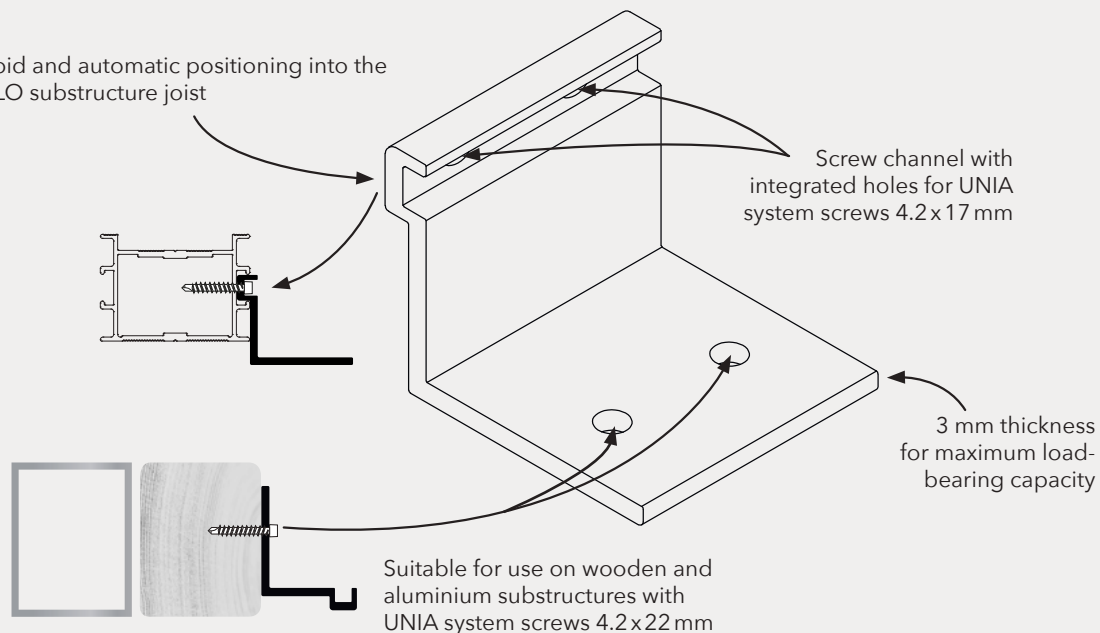
RELO AW22 SET

PU	Product No.
16 PCS	9009941018175



BRANDING
Custom branding upon request

Rapid and automatic positioning into the RELO substructure joist



DOWNLOADS



Data Sheet



Tips & Tricks



Configurator