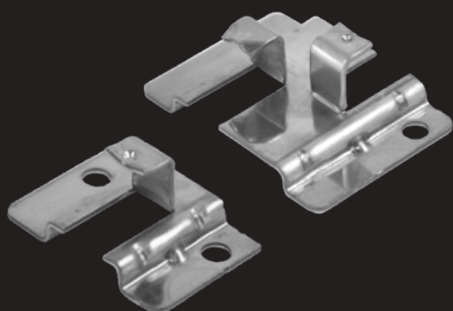


# ZONA

## WPC DECKING CONNECTOR



The **ZONA** stainless steel decking connector ensures the installation process is quick, easy, and straightforward.

Two parallel mounting zones ensure a trouble-free decking connection, provide an additional level of ventilation, prevent protruding screw heads and allow mounting to metal substructures.

The engagement arms for securing the board into position are pre-tensioned and tolerate any production-related irregularities of the board profile. Weather-related dimensional changes (shrinkage and swelling) are also compensated for.

The decking connector ZONA is a customized product for our manufacturing customers and is produced to order, starting from a production quantity of half a million units.

### OVERVIEW

<b>Dimensions:</b>	Length 30 mm   Width 42 mm   Height 4.6 mm
	Start-End-Connector: Length 22 mm   Width 31 mm   Height 4.6 mm
<b>Material:</b>	Stainless steel
	System screw UNIA Hardened stainless steel
<b>Fastening type:</b>	Concealed Sliding point fixation
<b>Decking profile:</b>	For side grooved composite decking boards

### ZONA

Description	PU	Prod. No.
WPC-Connector	100 PCS	013604002
Start-Endclip	50 PCS	013702002



#### SET-PACK

Each packaging contains the screws required for installation, UNIA system screws 4.2x28 mm and assembly instructions



#### BRANDING

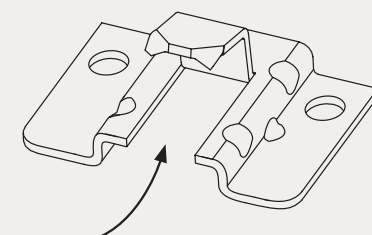
Custom branding upon request

Board receiving plate allows easy insertion of decking boards

Mounting plate for the substructure permits a secure screw connection

Customizable groove engagement holding arms

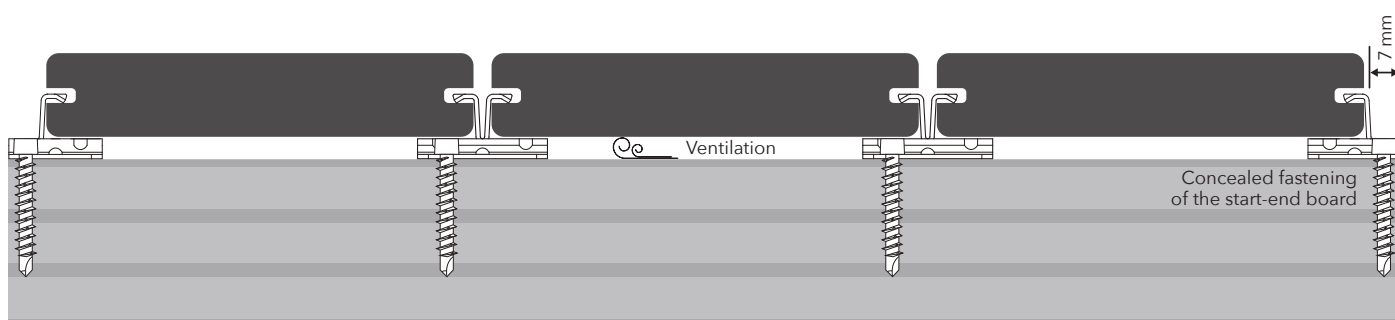
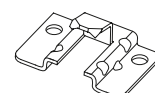
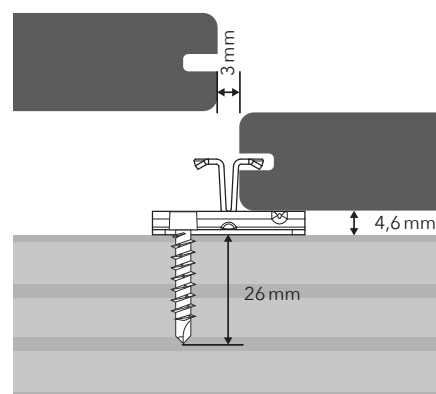
Integrated ventilation base plate for structural protection



Compatible start and end connectors



ZONA can be adapted to suit a wide range of profile dimensions



#### DOWNLOADS



Data sheet



Tips & Tricks